

LUXURY TOWABLE  
FIFTH WHEELS

DEDICATED TO QUALITY,  
INNOVATION AND  
VALUE.



FAMILY OWNED SINCE 1983

# Prairie Schooner



*For Today's Pioneer...*



# Prairie Schooner

*It's All In The Details!*



*MAIN LIVING QUARTERS • MODEL 36FTE*



*MAIN LIVING QUARTERS • MODEL 34FBR*

## **RESIDENTIAL LIVING ...**

Relax by the fire or kick back in a plush recliner and enjoy the views through the many large picture windows. Gulf Stream's innovative floorplans with spacious design, abundant storage, brand name appliances and residential amenities make vacations away from home filled with comfort and luxury.



*DINETTE • MODEL 36FQS*

## **COMFORT ...**

When you are comfortably lounging back and enjoying the RV lifestyle, notice the attention to detail Gulf Stream Coach has built into your Prairie Schooner. From abundant counter top work space to hardwood cabinet doors and stiles, Prairie Schooner is there to insure you of a rich and relaxed living experience.





*KITCHEN • MODEL 34FLR*

***FIVE STAR DINING ...***

Life away from home has never been better. Our residential style kitchens feature spacious counter work space, deep sinks, stove, oven, microwave, freezer/refrigerator and enough cabinet storage for weeks worth of supplies



FAMILY OWNED SINCE 1983



# Prairie Schooner

## ROOF R-13 (R-26 w/FLEXFOIL OPTION)

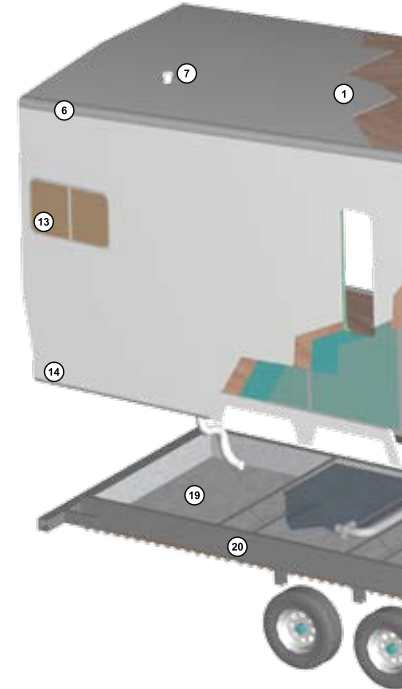
1. Seamless One-Piece Rubber Roof Featuring a 12-Year Warranty
2. 3/8" Roof Decking
3. Flexfoil™ Heat Recovery Insulation (option)
4. Thick Blanket of Fiberglass Insulation
5. 5" Welded Aluminum Trusses - 16" on center
6. 3" Radius Transition for proper water run-off
7. Attic Vent for improved moisture control



A residential oversized stainless steel double sink is deep enough to wash even the largest pots and pans.

## SIDEWALL (R-10)

8. Vacuum Bonded Sidewall with High Gloss Gelcoat Fiberglass Exterior
9. Thick Wood Fiberglass Backer
10. Thermal Shield Insulation (Eliminates Thermal Transfer of Heat and Cold on Aluminum Wall Studs)
11. High-Density Block Foam Insulation between the wall studs
12. Welded Aluminum Wall Studs
13. Dark Tinted Safety Glass Windows (Standard)
14. Full Radius Wrap Enclosure



## HIDDEN STRENGTHS

- Family Owned for Over 20 Years
- Welded Aluminum Structure
- Fully Insulated and Heated Basement, Including Plumbing, Gate Valves and Holding Tanks
- Stained Solid Hardwood Cabinet Framing Throughout the Coach
- Residential Hardwood Door Casing, Molding & Chair Rail
- 21 Cu. Ft. of Underbed Storage Lined with a Deep ABS Storage Tub
- 90° Front Profile, providing 40% More Storage
- Bathroom and Bedroom on One Level
- Solid Steel One Piece Slide-out Header
- Thermal Shield Insulated Six Piece Vacuum Bonded Sidewall – Eliminates Thermal Transfer of Heat or Cold on Aluminum Wall Studs

## SOLID HARDWOOD CABINETRY



PREDRILLED  
HARDWOOD  
CONSTRUCTION



COMPETITOR'S CABINETRY

## RESIDENTIAL STYLE CABINETRY



Residential cabinetry features stained solid hardwood stiles that are pre-drilled and screwed together. The drawer fronts and mortis and tenon door frames are highlighted with residential style hardware.

Competitor's use vinyl wrapped cabinet fronts prone to peeling, fading and tearing. The softer composite wood used in their stiles does not have the structural strength or integrity of solid wood cabinet construction.

Features and specifications shown may not be available on all models and are subject to change without notice.



(Please don't try this with any other recreational vehicle besides a Prairie Schooner.)

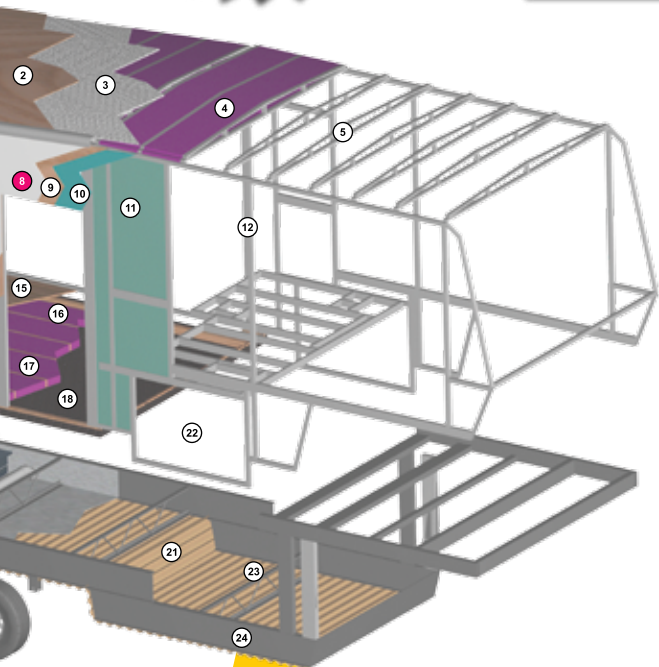


**HIGH GLOSS  
GELCOAT  
FIBERGLASS**



Unwanted moisture escapes through our standard "Easy Escape" attic vents that extend the life of your coach.

Gulf Stream luxury fifth wheels are equipped with a convenience center with controls for lights, slides and tank level indicators



**FLOOR & BASEMENT  
R-16 (R-32 <sup>W/FLEXFOIL OPTION</sup>)**

- 15. 5/8" Floor Decking
- 16. 3" Floor Joists - 12" on center
- 17. Thick Blanket of Fiberglass Insulation
- 18. Vapor Barrier Protective Sheeting
- 19. Flexfoil™ Insulation on the bottom and sides of the Frame (97% Heat Reflection)
- 20. 10" I-Beam Mainrails with Durable Protective Coating
- 21. 100% Enclosed Underbelly
- 22. Heated Basement Including, ABS Tanks and Gate Valves
- 23. Spaced Rod and Angle with Z-Bar Supports
- 24. Drop Frame Construction (N/A 30FRL, 32RLF)

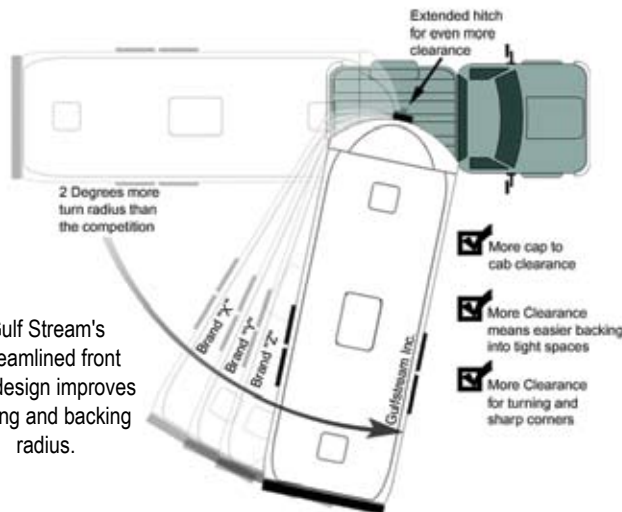


**MOR/ryde**  
 Prairie Schooner is Equipped with the Mor/ryde RE Suspension System  
[www.morryde.com](http://www.morryde.com)

**ONE-PIECE  
STEEL HEADER...**

Our slideroom is anchored together with a one piece steel header. This steel header provides unmatched strength and support which will ensure a square, tight seal every time.

Gulf Stream's Streamlined front cap design improves turning and backing radius.

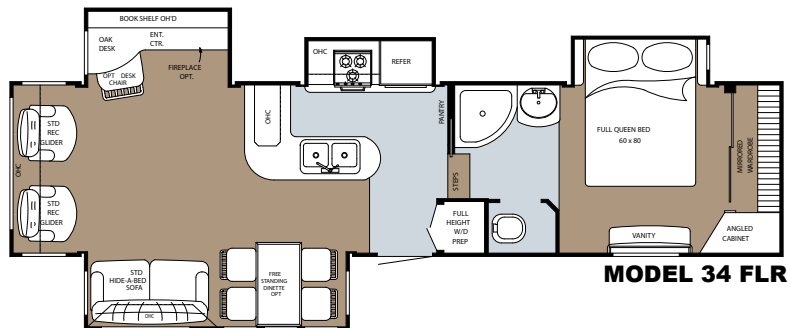
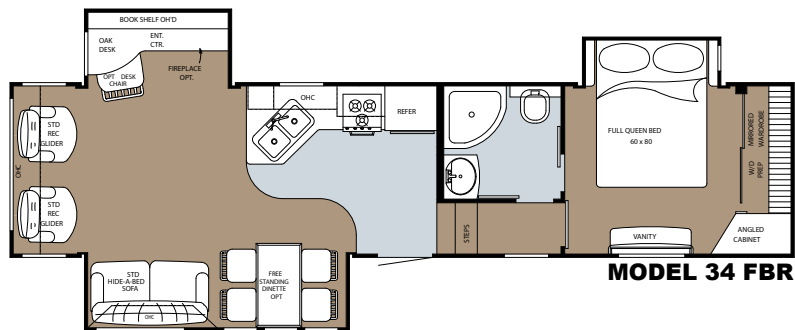
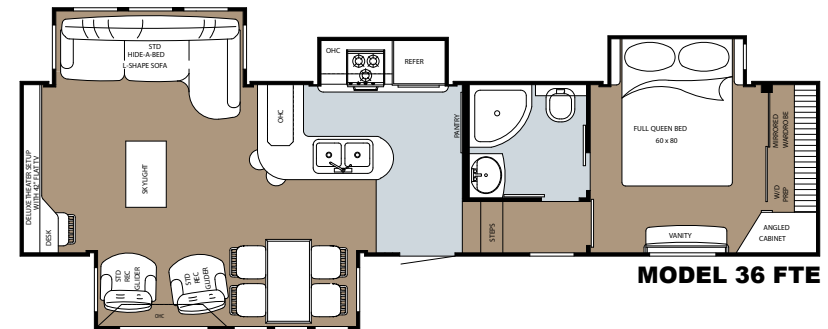
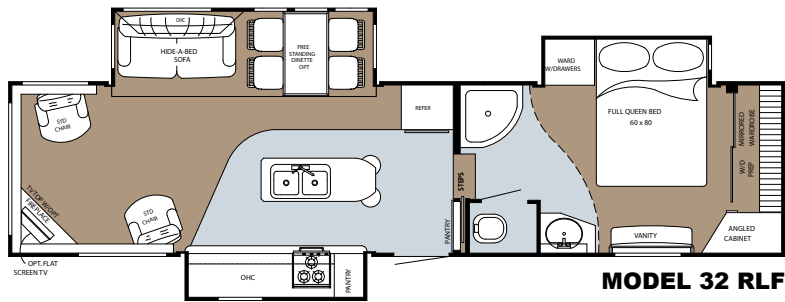
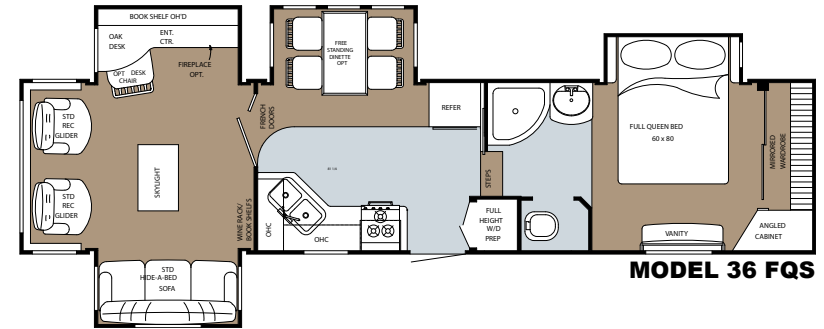
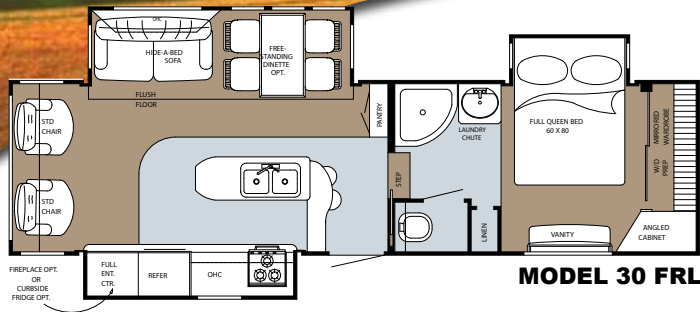


- More cap to cab clearance
- More Clearance means easier backing into tight spaces
- More Clearance for turning and sharp corners



FAMILY OWNED SINCE 1983

# Prairie Schooner



<b>SPECIFICATIONS...</b>						
<b>MODEL NAME</b>	<b>30 FRL</b>	<b>32 RLF</b>	<b>34 FBR</b>	<b>34 FLR</b>	<b>36 FQS</b>	<b>36 FTE</b>
Length	32'-6"	36'-7"	35'-10"	36'-6"	37'-6"	37'-6"
Width (without awning)	95"	95"	95"	95"	95"	95"
Height (exterior)	12'-4"	12'-4"	12'-4"	12'-4"	12'-5"	12'-5"
Height (interior)	83"	83"	83"	83"	83"	83"
GVWR	14,430	14,200	14,410	14,270	15,500	15,500
*Dry Weight (approx.)	10,197	10,710	11,000	11,522	12,279	12,676
*Hitch Weight (approx.)	2,430	2,200	2,410	2,270	2,520	2,220
Black Water Tank Cap.	40 gal.	40 gal.	40 gal.	40 gal.	40 gal.	40 gal.
Grey Water Tank Cap.	80 gal.	80 gal.	80 gal.	80 gal.	80 gal.	80 gal.
Fresh Water Tank Cap.	60 gal.	60 gal.	60 gal.	60 gal.	60 gal.	60 gal.
LP Gas Tanks	2x30 lb.	2x30 lb.	2x30 lb.	2x30 lb.	2x30 lb.	2x30 lb.
Furnace (BTU's)	42,000	42,000	42,000	42,000	42,000	42,000
Water Heater	12 gal.	12 gal.	12 gal.	12 gal.	12 gal.	12 gal.
Std. Bed Size	60"x80"	60"x80"	60"x80"	60"x80"	60"x80"	60"x80"

\*NOTE: Weights are approximate and based on standard features. Optional equipment is not included. Features and specifications shown may not be available on all models and are subject to change without notice.



## STANDARD FEATURES

### INTERIOR

- WAINSCOTED FEATURE WALL
- HONEY CHERRY PANELING
- HARDWOOD STILES- HARD ROCK MAPLE
- STUCCO WALL VINYL
- COUNTERTOP MATERIAL – BUTTERRUM WITH WIDE SELF EDGE (LAV NS)
- 6-PANEL BATH /PARTITION DOOR
- LEADED GLASS DOORS (MSO) (30FRL 32RLF) (ENT. CTR ALL)
- ADOBE CEILING PANEL
- WHITE CEILING TRACK
- BRENTWOOD FACIA
- RESIDENTIAL DOOR CASING (LR & BATH DOOR OPENING)
- BRENTWOOD CHAIR RAIL
- UNDER CABINET TRIM – KITCHEN & MSO OVERHEADS
- CATHEDRAL MORTISE & TENON DOORS ON UPPER CAB (LR, KITCHEN)
- MSO ANGLED OVERHEAD CABINETS (NA 36FQS)
- COAT PANTRY CLOSET (32RLF)
- LINOLEUM BRIDGEWAY (KITCHEN & BATH)
- CARPET & PAD-AURORA WHEAT

### HEATING AND COOLING

- 42,000 BTU FURNACE
- WATER HEATER BY-PASS VALVE
- 12 GAL GAS/ELECTRIC DSI WATER HEATER
- 15,000 BTU AIR CONDITIONER
- CENTRAL DUCTED AIR CONDITIONER
- SECOND A/C PREP (BEDROOM)
- WATER CONVENIENCE CENTER
- BLACK TANK FLUSH BATH
- CHINA TOILET
- 34"X34" SHOWER PAN & SURROUND - BRECCIA
- RADIUS SHOWER DOOR
- LAV SINK – CLAY BRECCIA
- MIRRORRED MEDICINE CABINET
- RECESSED BATH STEP
- SKY DOME (BATH)
- PLATINUM BATH HARDWARE

### ELECTRICAL

- 50 AMP SERVICE W/MARINCO CORD
- CEILING FAN
- WALL MONITOR PANEL
- (2) FLASHLIGHTS W/REPAIR KIT
- CARBON MONOXIDE DETECTOR
- EXTERIOR LIGHTS (PATIO)
- POWER BATH VENT
- SMOKE DETECTOR
- TV ANTENNA WITH AMP & BOOST
- CLOSET LIGHTS
- CABLE READY
- SATELLITE DISH PREP
- LIGHTED EXT STORAGE COMPARTMENTS
- TV JACK IN BEDROOM
- 12 V & 110 V LIGHTING IN SLIDE OUT
- L.P. DETECTOR
- (2) SWING ARM LIGHTS (MOST MDLS)
- SURROUND SOUND DVD/CD/AM/FM STEREO WITH (5) SPEAKERS

### FURNISHINGS

- DECORATIVE WALL MIRROR
- LAUNDRY CHUTE WITH BASKET
- INTERIOR DOOR HANDLE – BRENTWOOD
- NIGHT SHADES
- POTS & PAN DRAWER UNDER RANGE
- VINYL WALL BORDER
- WALL MOUNT FIRE EXTINGUISHER
- AIR BED SOFA
- FREE STANDING DINETTE AND (4) CHAIRS WITH STORAGE
- BAR STOOLS (30FRL 32RLF 36FTE)
- (2) DELUXE RECLINER GLIDERS
- BRENTWOOD HEADBOARD WITH FABRIC INSERT
- QUEEN BED 60" X 80" INNERSPRING WITH GAS LIFTS
- BEDSPREAD WITH ATTACHED SHAM
- UNDER BED STORAGE

### APPLIANCES

- SEALED 3-BURNER RANGE W/22" OVEN
- LARGE REFER 8 C.F.
- 6-PANEL REFRIG INSERT-BRENTWOOD
- RANGE TOP COVER
- (2) QUARRY BLUFF SINK COVERS
- STAINLESS STEEL KITCHEN SINK
- PORTABLE TRASH CAN
- 30" OVER-THE-RANGE NON-CONVECTION MICROWAVE WITH BUILT IN RANGE VENT
- PULL OUT KITCHEN SPRAYER FAUCET
- ISLAND KITCHEN (30FRL 32RLF)
- SLIDE OUT PANTRY W/BASKETS (32RLF)

### EXTERIOR

- BEDROOM SLIDEOUT
- ELECTRIC SLIDE OUT ROOM WITH FLUSH FLOOR (MSO ESO)
- ALUMINUM RIMS
- 16" RADIAL TIRES WITH SPARE TIRE & CARRIER
- ELECTRIC HITCH JACKS
- REAR STABILIZER JACKS
- FOIL INSULATED UNDERBELLY
- WRAPPED UNDERBELLY
- SNAP JACKS
- IN FLOOR HEAT DUCT
- TRIPLE STEPS
- RADIUS DOOR W/DEAD BOLT LOCK
- RUBBER ROOF
- ROOF LADDER
- BLACK FRAMED TINTED SAFETY GLASS PICTURE WINDOWS (30FRL 34FBR 34FLR 36FQS)
- BLACK FRAMED RADIUS TINTED SAFETY GLASS WINDOWS
- HEATED & ENCLOSED HOLDING TANKS
- VINYL DECKING BASEMENT FLOOR
- HEATED STORAGE COMPARTMENTS
- AWNING
- MOR-RYDE AXLES
- FIBERGLASS FRONT & REAR CAPS
- DOUBLE AXLES (34' & UNDER) (6000 #)
- TRIPLE AXLES (36') (5200 #)

- (2) 30 # LP BOTTLES WITH AUTO CHANGE
- OUTSIDE SHOWER
- SEWAGE HOSE HOLDER
- BATTERY DISCONNECT
- BATTERY (FW)
- EXTERIOR FOLD AWAY DOOR HANDLE
- 6'-5" HEIGHT (34' & UP) (MSO)
- 6'-2" HEIGHT (MSO) (30FRL 32RLF)
- 43" SLIDEOUT DEPTHS (MSO)
- EXTENDED PIN BOX

## POPULAR OPTIONS

- XL PACKAGE (REQUIRED)
  - GEL COATED FIBERGLASS EXT WALLS
  - QUEEN BED PILLOW TOP MATTRESS
  - CROWN MOLDING (LVRM AREA)
  - (2) SECURITY LIGHTS
  - WATER PURIFIER
  - FLUORESCENT LIGHTS
- ENTERTAINMENT TV PACKAGE (REQ)
  - LVRM 26" LCD TV -30FRL
  - LVRM 32" LCD TV -32RLF & UP
  - BDRM 15" LCD TV -ALL
- SOLID SURFACE COUNTERTOPS QUARRY BLUFF (KITCHEN AREA) (REQ)
- 42" LCD TV P/O 32" (LVRM) (NA 30FRL 32RLF)
- LIVING ROOM FIREPLACE (N/A 36FTE)
- 110V HEATER WALL MOUNT (FRT BDRM) (34' & UP)
- 13,500 BTU AIR CONDITIONER (BR)
- FANTASTIC FAN W/TOUCH PAD CONTROLS
- CENTRAL VAC
- WASHER/DRYER PREP
- THROW RUG (KITCHEN)
- (2) EURO CHAIRS W/OTTOMAN P/O STD CHAIRS N/C
- SOFA W/OTTOMAN
- (2) LEATHER LOOK RECLINERS P/O STD CHAIRS
- DESK CHAIR (34FBR 34FLR 36FQS 36FTE)
- SWING ARM TV BRACKET
- KING BED IPO QUEEN BED (NA 30FRL)
- BED LOUNGE
- PILLOW PACKAGE
- CONVECTION MICROWAVE P/O STD
- GENERATOR PREP
- THERMAL (DOUBLE PANE) WINDOWS (NA SUNBURST WINDOW)
- REAR ELECTRIC STAB JACKS
- EXTERIOR REFRIGERATOR (30FRL)
- DOUBLE INSULATION IN ROOF & FLOOR (BUBBLE PACK)
- 12 V HEAT PADS FOR HOLDING TANKS
- EXTERIOR PAINT PACKAGE
- POWER AWNING
- MAIN ROOM SLIDE OUT AWNING
- BEDROOM SLIDE OUT AWNING
- THIRD ROOM SLIDE OUT AWNING
- FOURTH ROOM SLIDE OUT AWNING (34FLR 36FQS 36FTE)

### WARRANTY

Two-Year Warranty - on all appliances and major structural components. One-Year Warranty on construction and workmanship.



The bed reveals a deep one-piece ABS storage compartment (over 21 cu. ft.) that is perfect for pillows, blankets and more.



FAMILY OWNED SINCE 1983



**A FULL-LINE RV  
MANUFACTURER**



**FAMILY OWNED SINCE 1983**



### **GULF STREAM COACH EXCEPTIONAL VALUE...**

Gulf Stream has been awarded the prestigious Platinum Recreational Vehicle Manufacturer Quality & Productivity Award in recognition of our commitment to producing quality recreational vehicles.

Your family and friends will feel safe and comfortable in a Gulf Stream travel trailer or fifth wheel. Compare... and you will see the exceptional value of Gulf Stream travel trailers & fifth wheels.

### **GULF STREAM FACILITIES...**

Family owned for 25 years and located in the heart of the Amish country, the complex covers over 200 acres and includes more than 1.5 million square feet of state-of-the-art manufacturing facilities.

Gulf Stream employs over 1400 men and women who are continuously trained on quality initiatives fostering the most creative and innovative culture in the RV industry.

With 25 years of manufacturing experience producing quality Recreational Vehicles, Gulf Stream is a leading manufacturer of high quality and high value RV products that are distributed through a partnership relation of independent dealers who are focused on exceeding customer expectations.

### **FEATURING A 2-YEAR WARRANTY!**

In addition to our standard one year warranty, Gulf Stream Coach, Inc., offers an exclusive 24 month warranty on structural components. In addition, major component manufacturers are providing 24 month warranties on their products installed in Gulf Stream units such as refrigerators, antenna, furnace, water heater, air conditioner, awning, range, microwave and more. See the official written Gulf Stream Coach, Inc., Warranty for details.

\*for purposes of this warranty, "structural components" shall be limited to the structure of the side walls, front and back walls, roof and floor.

POST OFFICE BOX 1005 • YOUR GULF STREAM COACH DEALER • NAPPANEE, IN 46550



**VISIT**

**WWW.GULFSTREAMRV.COM**

**FOR MORE DETAILED INFORMATION...  
OR CALL 1-800-765-8787-EXT. 3288**

For more information and available options, contact your local Gulf Stream dealer, [www.gulfstreamrv.com](http://www.gulfstreamrv.com) or Gulf Stream Coach, Inc. Gulf Stream Coach, Inc., reserves the right to make changes in prices, colors, materials, components and specifications and to discontinue models at any time without notice or obligation. Gulf Stream Coach, Inc., assumes no responsibility for any error in type or print reproduction of specifications or floorplans in this brochure. Photographs may show equipment or items that are optional and are not included in the purchase price of the coach. Test drive and review a current model at your nearest Gulf Stream dealer. © 2002 Gulf Stream Coach, Inc., Nappanee, Indiana U.S.A.

7/07-SP-\_k