

2010

Nomad[®]

**ALUMA-BOND
Travel Trailer & Fifth Wheel
Floor Plans**



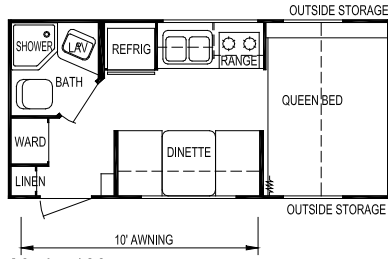
Your local *Nomad* dealer is:

SKYLINE[®]

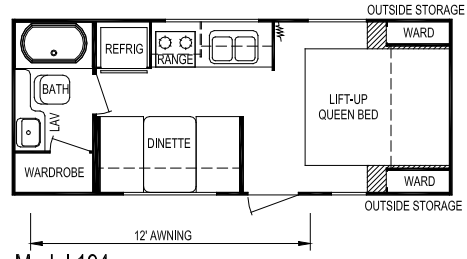
BRINGING AMERICA HOME. BRINGING AMERICA FUN.

Effective March 2009

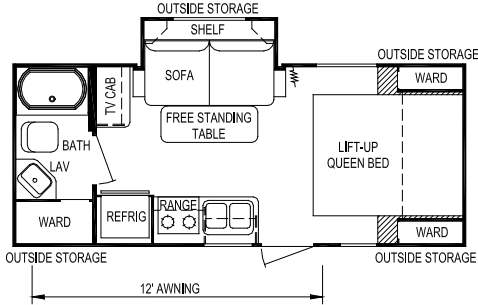
Ultra-Lite Travel Trailers



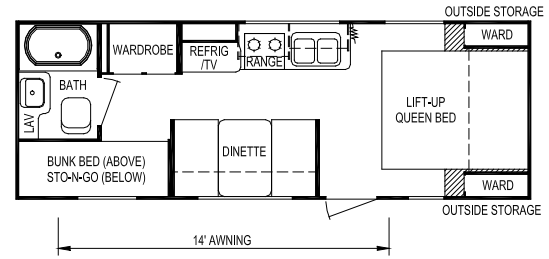
Model 189



Model 194

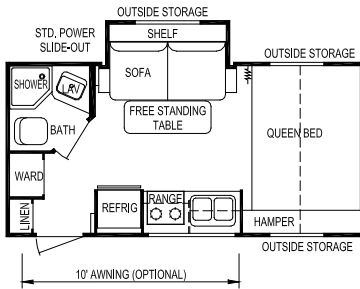


Model 210

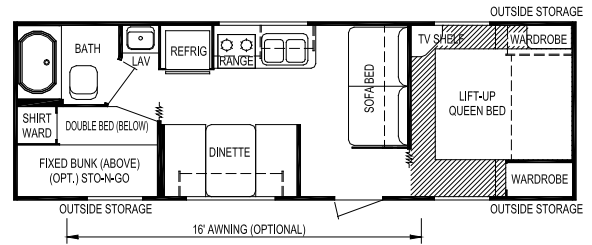


Model 248

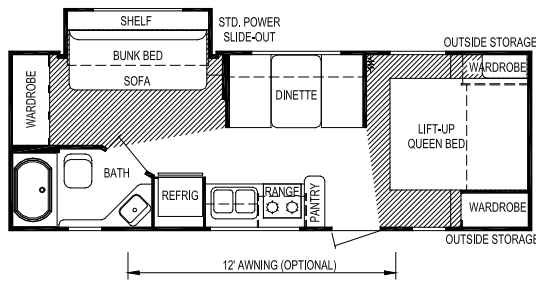
Travel Trailers



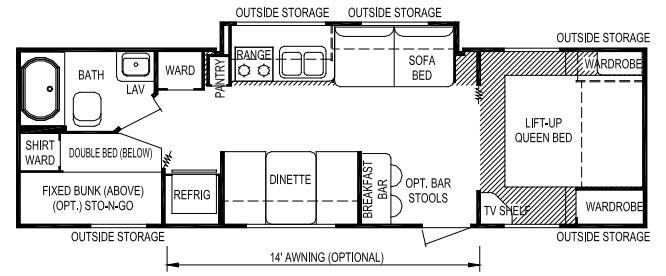
Model 1811



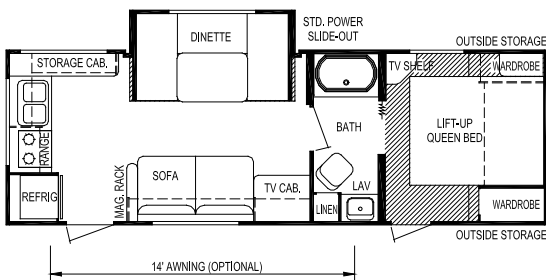
Model 2711



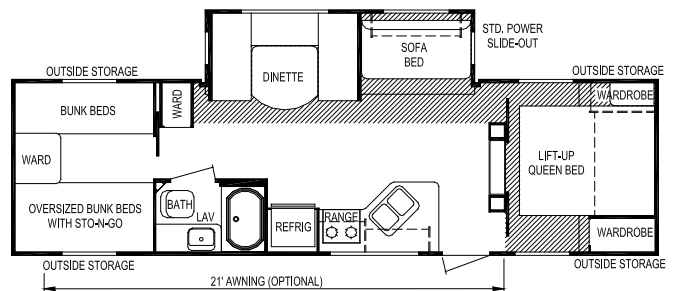
Model 2511



Model 2911

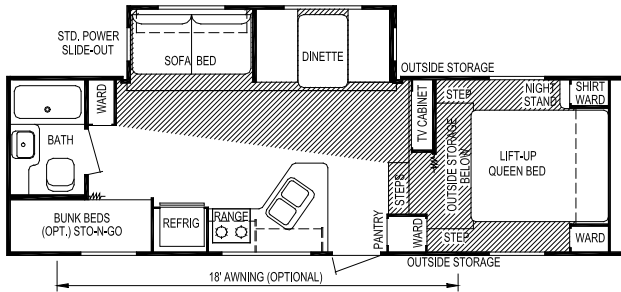


Model 2610

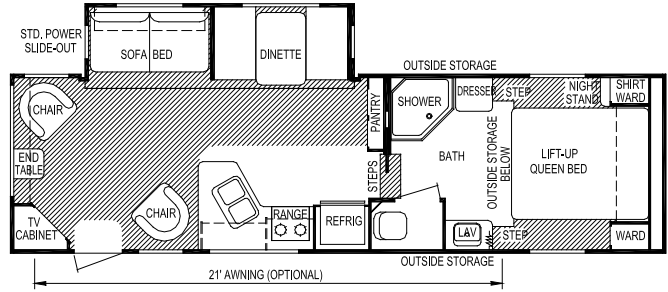


Model 2970

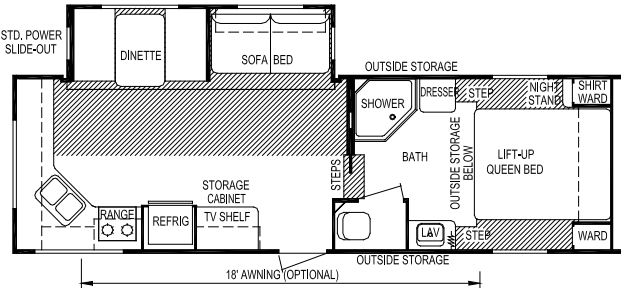
Fifth Wheels



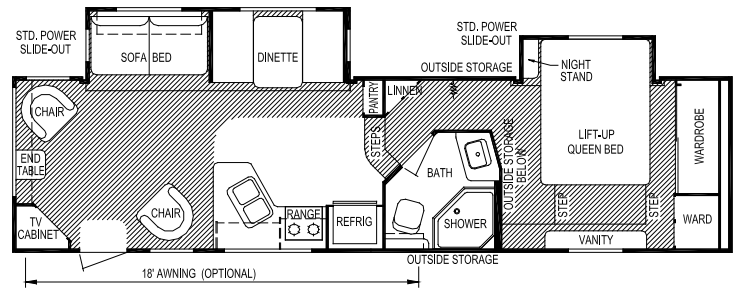
Model 2456



Model 2756



Model 2556



Model 3055

Specifications

Ultra-Lite Travel Trailers

Travel Trailers

Fifth Wheels

Model	189	194	210	248	1811	2511	2610	2711	2911	2970	2456	2556	2756	3055	
Weights															
Unloaded Vehicle Weight (see Note 2)	3,000	3,475	3,475	3,925	4,125	4,575	5,025	5,750	5,850	5,975	6,400	6,675	6,775	7,650	
Dry Hitch Weight	275	350	350	400	375	550	625	625	650	675	1,375	1,450	1,625	1,950	
Dry Axle Weight	2,725	3,125	3,125	3,525	3,725	4,025	4,400	5,125	5,200	5,300	5,025	5,225	5,150	5,700	
GVWR (Total Capacity of Trailer)	4,750	4,750	4,750	5,940	6,200	7,750	7,750	7,750	7,750	8,800	9,600	9,600	9,600	11,200	
Carrying Capacity (see Note 2)	1,625	1,125	1,125	1,850	1,900	2,975	2,525	1,800	1,700	2,575	2,950	2,675	2,550	3,475	
Accommodations															
Sleeping (standard / optional)	3	6	4	6	4	8	6	9	9	10	8	6	6	6	
Bed Size (standard)	60" x 80"	60" x 74"	60" x 74"	60" x 74"	60" x 80"	60" x 74"	60" x 74"	60" x 74"	60" x 74"	60" x 74"	60" x 74"	60" x 74"	60" x 74"	60" x 80"	
Second Bed Size	N/A	N/A	N/A	N/A	N/A	28" x 76"	N/A	48" x 74"	48" x 74"	(2) 28" x 74"	(2) 28" x 76"				
								28" x 76"	28" x 76"	(2) 38" x 74"					
Dinette Size	33" x 70"	39" x 70"	N/A	39" x 70"	N/A	39" x 70"	48" x 84"	39" x 70"	39" x 70"	48" x 79"	39" x 70"	39" x 70"	39" x 70"	39" x 70"	
Sofa	N/A	N/A	42" x 64"	N/A	42" x 64"	42" x 74"	42" x 64"	42" x 64"	42" x 64"	41" x 70"	42" x 64"	42" x 64"	42" x 64"	42" x 64"	
Measurements															
Exterior Length (see Note 3)	19'-9"	22'-6"	22'-4"	25'-5"	20'-3"	27'-0"	28'-4"	29'-1"	31'-11"	33'-3"	28'-3"	28'-3"	29'-11"	33'-5"	
Exterior Width (see Note 3)	90"	90"	90"	90"	96"	96"	96"	96"	96"	96"	96"	96"	96"	96"	
Exterior Height (see Note 3)	9'-11"	9'-11"	9'-11"	9'-11"	9'-11"	10'-1"	10'-1"	10'-1"	10'-4"	10'-4"	12'-1"	12'-1"	12'-1"	12'-1"	
Interior Height	76"	76"	76"	76"	76"	76"	76"	76"	76"	76"	84"	84"	84"	84"	
Capacities															
Fresh Water System (gallons)	32	32	32	32	46	46	46	46	46	46	46	46	46	46	
Gray Water Tank (gallons)	28	28	28	28	31	31	62	31	40	40	71	71	71	71	
Black Water Tank (gallons)	28	28	28	28	31	31	31	31	40	40	40	40	40	40	
Air Conditioner Size (optional)	13,500	13,500	13,500	13,500	13,500	13,500	13,500	13,500	13,500	13,500	13,500	13,500	13,500	13,500	
Awning Size (optional)	10' (std.)	12' (std.)	12' (std.)	14' (std.)	10'	12'	14'	16'	14'	21'	18'	18'	21'	18'	
Converter Size (amps)	55	55	55	55	55	55	55	55	55	55	55	55	55	55	
Furnace Rating (Btu)	18,000	18,000	18,000	18,000	18,000	25,000	25,000	25,000	25,000	25,000	25,000	25,000	25,000	25,000	
Propane Gas Capacity (pounds)	40	40	40	40	60	60	60	60	60	60	60	60	60	60	
Tires (see Note 4)	205/ 75R14-C	205/ 75R14-C	205/ 75R14-C	205/ 75R14-C	205/ 75R14-C	205/ 75R14-C	205/ 75R14-C	205/ 75R14-C	205/ 75R14-C	225/ 75R15-D	225/ 75R15-D	225/ 75R15-D	225/ 75R15-D	225/ 75R15-D	
Water Heater (gallons)	6	6	6	6	6	6	6	6	6	6	6	6	6	6	

Notes

- (1) All weights, dimensions, and capacities shown are approximate values.
- (2) Unloaded vehicle weight and carrying capacity will vary depending upon optional equipment. Full propane tanks are factored into carrying capacity. Skyline weighs every unit at the factory. See trailer weight information label located inside the front entry door for specific unloaded vehicle weight and cargo carrying capacity.
- (3) Dimensions stated to industry standards. Exterior length includes approximately a four foot hitch on travel trailers. Exterior height includes air conditioner, if installed. Exterior width does not include the width of the awning, if installed.
- (4) Goodyear® Marathon ST Radial tires are a mandatory option.

Interior

Cabinets

- All Wood Drawers w/Steel Side Roller Guides
- High Pressure Laminate Countertops
- Raised Panel Cabinetry

Decor

- Color-Coordinated Designer Interiors
- Color-Coordinated Wall Border (Optional on Ultra-Lites)
- Deluxe Box Valance on All Living Area Windows (Straight Box Valance on Ultra-Lites)
- Mini Blinds
- Embossed Vinyl Flooring

Kitchen & Living Area

- Large Dometic® Refrigerator
- Raised Panel Refrigerator Door Insert
- Dinette Table w/Folding Legs for Use Inside or Out (Excluding Model 1811)
- Acrylic Kitchen Sink w/Deep Basin
- High Rise Kitchen Faucet
- Wedgewood® Three-Burner Range
- Lighted Range Hood w/Fan
- Park Cable for TV Hookup
- Six Gallon Fast-Recovery Gas Water Heater
- 120 V to 12 V Power Converter (55 amps)
- System Monitor Panel (Fresh Water, Battery & Holding Tank Levels w/Water Heater Switches) (Optional on Ultra-Lites)
- Dinette Doors (Excluding Model 1811 & Ultra-Lites)

Bedroom / Bath

- TV Shelf & Hookup (Where Applicable)
- Color-Coordinated Quilted Bedspread
- Deluxe Headboard (Optional on Ultra-Lites)
- Inner Spring Mattress
- Power Bath Exhaust Fan
- Medicine Cabinet w/Mirror
- Towel Ring
- Bath Skylight Over Tub / Shower (Optional on Ultra-Lites)
- ABS Tub/Shower

Exterior

Roof Construction

- Tapered Trusses on 16" Centers to Promote Water Runoff
- Seamless One-Piece Roof w/Manufacturer's 12-Year Limited Warranty
- Wide Rain Gutter Rails
- R-7 Insulation

Wall Construction

- Fiberglass Exterior w/Custom Styled Exterior Graphics
- Welded Aluminum Frame Sidewalls & Endwalls
- Laminated Sidewall Construction w/Block Foam Insulation, Steel Cabinet Backers, Luan Exterior Panel Under Fiberglass Exterior
- Radius Tinted Slider Clamp-Ring Windows
- Radius Entry Door w/Screen Kick Panel (Optional on Ultra-Lites)
- Flush-Mount Heavy Duty Exterior Trunk Doors w/Continuous Hinge
- Patio Convenience Light w/Amber Lens

Chassis Construction

- Steel Frame I-Beam Chassis w/Steel Outriggers
- Dual Battery Rack (Travel Trailers)
- Black Rotocast Wheel Wells (Most Models)
- 10" Electric Brakes at All Wheels (12" on Fifth Wheels)
- Safety Chains (Travel Trailers)
- Enclosed Underbelly Containing All Tanks (Drain Valves Not Enclosed)
- Rear Bumper
- Breakaway Safety Switch

Floor Construction

- 2 x 3 Floor Framing w/R-7 Insulation & 5/8" Tongue & Groove Floor Decking (Excluding Ultra-Lites)

- Tightly Sealed Woven Polyethylene Underbelly
- Floor-Ducted Heating to Increase Storage in Lower Cabinets (Excluding Ultra-Lites)
- Laminated Floor Construction w/Welded Aluminum Frame, Block Foam Insulation & Luan Plywood Decking (Ultra-Lites Only)

Features

- LP Tanks w/Auto Changeover
- Rotocast Holding Tanks w/Drain Outlet
- Under-Floor Water Tank to Maximize Interior Storage
- Water Heater Bypass (Optional on Ultra-Lites)
- Exterior Hitch Light
- Exterior Assist Handle at Each Entry Door
- Exterior Patio Receptacle
- Molded Fender Skirt
- 30 amp Power Shore Line

Security & Safety

- LP Gas Leak/Carbon Monoxide Detector
- Smoke Detector
- Fire Extinguisher
- Flush Door Latch w/Integral Dead Bolt Lock

Additional Features (Ultra-Lites Only)

- Detachable Power Shore Line
- Color-Coordinated A&E® Side Awning
- TV Antenna

Popular Options

Interior Value Package (Excluding Ultra-Lites)

- Large Double Door Refrigerator
- 3-Burner Range w/17" Oven & Piezo
- Microwave Oven w/Carousel
- AM/FM/CD w/4 Inside & 2 Outside Speakers
- Oval Wall Mirror
- Bath Tub/Shower Surround
- Molded Sink Cover
- 6 Gallon Gas/DSI Water Heater
- Night Shades to Replace Mini-Blinds
- Decorative 12 V Light Above Dinette in Slide-Out Room Only
- Decorative 12 V Wall Light(s) at Sofa in Slide-Out Room Only

Interior Value Package (Ultra-Lites Only)

- Cabinet Bunk (Model 189)
- Hardwood Framed Cabinet Doors
- Microwave
- Monitor Panel
- Deluxe Padded Headboard (Where Applicable)

Exterior Value Package (Excluding Ultra-Lites)

- Stabilizer Jacks w/Sand Pads
- Double Entry Step (Models 1811, 2511, 2610 & 2711)
- Spare Tire w/Carrier & Cover
- Propane Bottle Cover (Travel Trailers Only)
- 13.5 MBTU Ducted Air Conditioner
- A&E Side Awning
- TV Antenna
- Exterior Shower
- Goodyear® Tires

Exterior Value Package (Ultra-Lites Only)

- Stabilizer Jacks (2 at Rear)
- 30 lb. Propane Bottles
- Propane Bottle Cover
- Goodyear® Tires

Outside Grill — Most Models

LCD TV w/DVD Player

Fireplace — Fifth Wheels

Drawer Package — Fifth Wheels

NO-NONSENSE WARRANTY

Manufacturing defects reported to Skyline within one year after original retail delivery of your new Travel Trailer by an authorized dealer will be corrected without charge and within reasonable times. Excluded are misuse (including lack of reasonable maintenance), minor imperfections, alterations, and dealer or owner improper transportation, installation, or hookup.

This warranty gives you specific legal rights. You may have other rights which vary from state to state.

Skyline's suppliers often provide additional warranties on their components beyond the Skyline factory bumper-to-bumper warranty. For example — the range, water heater, furnace and converter carry two-year supplier warranties while the air conditioner, refrigerator, microwave and awning carry three-year warranties. The one-piece roof carries a 12-year warranty. Ask your dealer for full details.

Manufacturer's Notice: All specifications, equipment, and prices are subject to change without prior notice. Production of all models subject to seasonal scheduling. Skyline Corporation reserves the right to improve a model without incorporating these changes in similar models produced at an earlier date.

Consult your automobile dealer and your recreational vehicle dealer to assure the proper match between tow vehicle and trailer. Tow vehicle and recreational unit must be properly equalized for efficient product performance and safety. Before you purchase your recreational vehicle, carefully consider the number of people it will accommodate and its end use. Manufacturer's load capacity restrictions and recommendations must be followed for safe and efficient product performance.

Your Retailer, an independent contractor, who is not an agent of Skyline Corporation, is the party responsible for your purchase contract and any additions, deletions, alterations, or attachments made to or in your recreational vehicle.



Go RVing
Life's A Trip™



For the name of your nearest Skyline-built RV dealer, call:
Elkhart, IN 1-800-736-2573

Or visit us at our Web Site at www.skylinecorp.com

SKYLINE®

BRINGING AMERICA HOME. BRINGING AMERICA FUN.

©03-11-09-9018, INDIANA, PRINTED IN THE U.S.A.