

NOMAD®

2014
Travel
Trailer
Floor
Plans



Model 298

Your local **NOMAD** dealer is:

SKYLINE
STRENGTH • KNOWLEDGE • TRUST

effective
Nov. 2013

Interior

Cabinets

- High Pressure Laminate Counter Tops
- Arch Top Cabinet Doors in Living Area Overheads

Decor

- Color-Coordinated Designer Interiors
- Embossed Vinyl Flooring
- Padded Dinette Seat Cushions
- Mini Blinds at All Windows Except Bunks

Kitchen & Living Room

- 3 cu. ft. Gas / Electric Refrigerator
- 2 Burner Range Top
- Microwave Oven w/ Turntable & Clock
- Acrylic Kitchen Sink w/ Faucet
- 12 Volt Demand Water Pump
- 16,000 Btu Furnace
- 13,500 Btu Air Conditioner
- 35 amp 12 Volt Power Convertor w/120 Volt Load Center
- Six Gallon Gas Water Heater
- TV Antenna w/Living Area Jack
- Wall Switched Ceiling Light at Entry

Bath

- ABS Tub w/Tub Faucet, Shower Hose & Head
- Shower Curtain
- Foot Flush Thetford Toilet

- Towel Ring & Toilet Paper Holder
- Wall Switched Ceiling Light

Exterior

Roof Construction

- Seamless One-Piece Rubber Roof
- Awning Drip Rail & Down Spouts

Wall Construction

- 6'-4" Interior Ceiling Height
- Wall Studs on 16" Centers (Maximum)
- Steel Strap Reinforcement on Walls for Superior Durability
- R-7 Settle-Resistant Insulation
- Twist Locks on All Storage Doors
- Clamp Ring Radius Corner / Dark Tint Safety Glass Windows
- Patio Convenience Light
- Radius Entry Door w/Screen
- Assist Handle at Entry Door

Chassis Construction

- Cambered Tubular Steel Chassis w/Steel Outriggers
- Battery Rack
- Chassis-Mounted Entry Step
- Electric Brakes at All Wheels
- Safety Chains & Breakaway Safety Switch
- Two Stabilizer Jacks
- Sidewinder Tongue Jack w/ Foot

Floor Construction

- 5/8" Tongue & Groove Floor Decking
- Tightly Sealed Woven Polyethylene Underbelly

Features

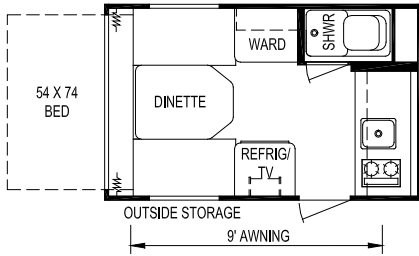
- Single 20 lb. LP Propane Tank
- Holding Tanks w/Drain Outlet
- Rear Bumper w/Sewer Hose Carrier
- Side Awning

Security & Safety

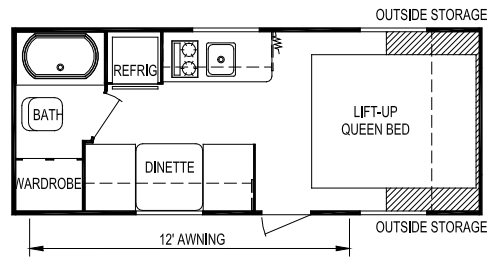
- Smoke Detector
- Propane Leak Detectors
- Carbon Monoxide Alarm
- Flush Door Latch w/Integral Dead Bolt Lock
- Fire Extinguisher

Popular Options

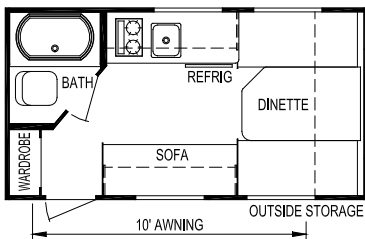
- Spare Tire Kit
- Power Vent Fan in Bath
- Park Cable Hookup
- Four Stabilizer Jacks (Replacing Two)
- Aluminum Wheels
- Bunk Fan/Light Combo (Expandables Only)
- 48x22 Front Window w/ Integral Rock Guard (Select Models)
- 6 Gallon DSI Water Heater (Replacing Pilot Light)
- Electric Awning w/LED Lights
- TV Jack, Swivel Brackets, Pods — Interior & Exterior
- AM/FM/DVD/MP3 Stereo w/4 Speakers



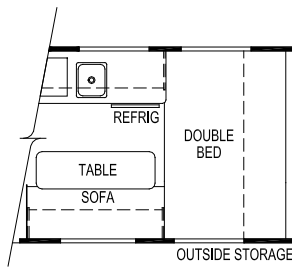
Model 131B



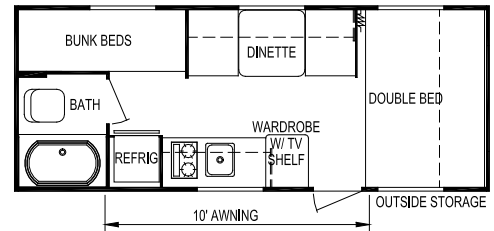
Model 183B



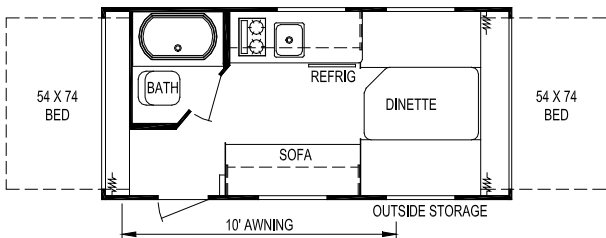
Model 140B



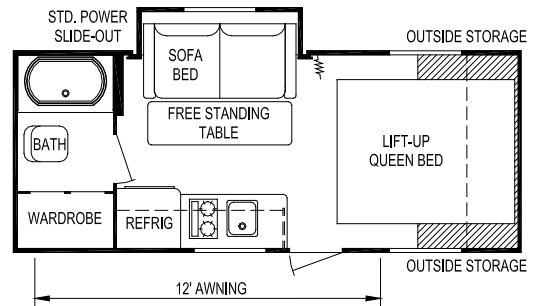
Opt. Double Bed
Model 140B



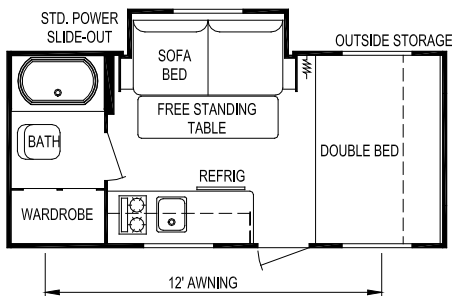
Model 186B



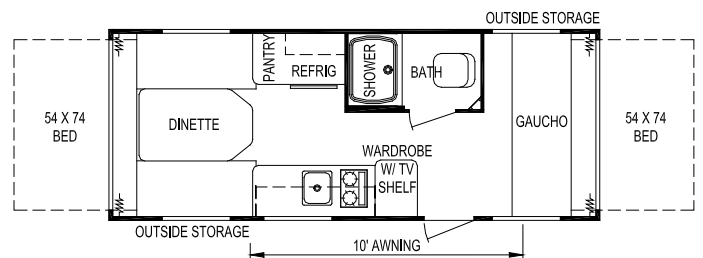
Model 163B



Model 188B



Model 170B



Model 191B

Model	131B	140B	163B	170B	183B	186B	188B	191B
Weights Unloaded Vehicle Weight (see Note 2)	2,125	2,225	2,450	2,775	2,700	2,700	2,900	2,800
Dry Hitch Weight	350	325	350	350	350	375	425	425
Dry Axle Weight	1,775	1,900	2,100	2,425	2,350	2,325	2,475	2,375
GVWR (Total Capacity of Trailer)	3,850	3,850	3,850	3,850	3,850	3,850	3,850	3,850
Carrying Capacity (see Note 2)	1,625	1,600	1,300	975	1,050	1,050	850	950
Accommodations Sleeping (standard / optional)	4	3	7	3	3	5	3	7
Bed Size	54" x 74"	N/A	54" x 74"	54" x 80"	60" x 74"	54" x 80"	60" x 74"	54" x 74"
Second Bed Size	N/A	N/A	54" x 74"	N/A	N/A	(2) 28" x 76"	N/A	54" x 74"
Dinette Size	44" x 80"	52" x 80"	52" x 80"	N/A	30" x 76"	30" x 76"	N/A	52" x 80"
Sofa	N/A	22" x 59"	22" x 59"	42" x 64"	N/A	N/A	42" x 64"	26" x 80"
Measurements Exterior Length (see Note 3)	14'-11"	16'-10"	18'-7"	19'-3"	21'-3"	21'-7"	21'-3"	21'-8"
Exterior Width (see Note 3)	84"	84"	84"	84"	84"	84"	84"	84"
Exterior Height (see Note 3)	9'-4"	9'-4"	9'-4"	9'-4"	9'-4"	9'-4"	9'-4"	9'-6"
Interior Height	76"	76"	76"	76"	76"	76"	76"	76"
Capacities Fresh Water System (gallons)	24	24	24	36	36	36	36	36
Gray Water Tank (gallons)	28	28	28	28	28	28	28	28
Black Water Tank (gallons)	6	28	28	28	28	28	28	28
Air Conditioner Size (Btu)	5,000	5,000	5,000	5,000	5,000	5,000	5,000	5,000
Awning Size	9'	10'	10'	12'	12'	10'	12'	12'
Convertor Size (amps)	35	35	35	35	35	35	35	35
Furnace Rating (Btu)	16,000	16,000	16,000	16,000	16,000	16,000	16,000	16,000
Propane Gas Capacity (pounds)	20	20	20	20	20	20	20	20
Tires	ST205/ 75R14-C	ST205/ 75R14-C	ST205/ 75R14-C	ST205/ 75R14-C	ST205/ 75R14-C	ST205/ 75R14-C	ST205/ 75R14-C	ST205/ 75R14-C
Water Heater (gallons)	6	6	6	6	6	6	6	6

Notes

(1) All weights, dimensions, and capacities shown are approximate values.

(2) Unloaded vehicle weight and carrying capacity will vary depending upon optional equipment. Full propane tanks are factored into carrying capacity. Skyline weighs every unit at the factory. See trailer weight information label located inside the front entry door for specific unloaded vehicle weight and cargo carrying capacity.

(3) Dimensions stated to industry standards. Exterior length includes approximately a four foot hitch on travel trailers. Exterior height includes air conditioner, if installed. Exterior width does not include the width of the awning, if installed.

Interior

Cabinets

- Hardwood Frame Cabinet Doors w/Arch Top Doors in Living Area Overhead
- Full Extension Ball Bearing Drawer Guides
- High Pressure Laminate Counter Tops
- Chestnut Cabinets

Decor

- Color-Coordinated Designer Interiors
- Embossed Vinyl Flooring
- Carpet & Pad as Shown on Floor Plans
- Extra Padded Dinette Seat Cushions w/Bolsters
- Mini Blinds at All Windows Except Bunks
- Deluxe Faux Leather Sofas (See Floor Plans for Models)
- New Window Treatment w/Side Drapery Panels at Most Windows

Kitchen & Living Area

- Double Door Refrigerator
- 3 Burner Range w/Oven & Piezo
- Radius Counter Tops
- Power Range Hood w/Light
- Large Carousel Microwave Oven w/Clock
- Black Acrylic Kitchen Sink w/High Rise Faucet
- LED Lighting Above Kitchen Sink
- Systems Monitor Panel
- 25,000 Btu Ducted Furnace
- 13.5 MBtu Roof Ducted Air Conditioner w/Wall Thermostat
- 120 V to 12 V Power Converter
- TV Antenna w/Booster
- Park Cable Hookup for TV
- 12V AM/FM/DVD/MP3 Stereo w/Aux. Input, Interior & Exterior Speakers
- Six Gallon Gas/DSI Water Heater
- Wall Switched Ceiling Lights at Each Entry
- Bright Low Energy LED Lighting Above Each Queen Bed
- Bright Low Energy LED Lighting Above Each Sofa in Living Room

Bedroom & Bath

- Color-Coordinated Quilted Bedspread

- Deluxe Headboard
- Lift-Up Bed Storage w/Gas Piston Struts
- Evergreen Mattress
- ABS Tub w/ABS Wall Surround
- Foot Flush Toilet
- Deluxe Medicine Cabinet w/Mirror
- Towel Ring & Toilet Paper Holder
- Skylight Over Tub
- Power Bath Vent
- Wall Switched Ceiling Light in Bath

Exterior

Roof Construction

- Tapered Roof Construction to Promote Water Runoff
- Seamless One-Piece Roof w/Manufacturer's 12-Year Warranty
- Awning Drip Rail w/Extra Long Down Spouts
- In Roof Ducted Air Conditioning

Wall Construction

- Wall Studs on 16" Centers (Maximum)
- Steel Strap Reinforcement on Walls for Superior Durability
- R-7 Settle-Resistant Insulation
- Twist Locks on All Storage Doors
- Clamp Ring Dark Tint Safety Glass Radius Corner Windows
- Patio Convenience Light
- Radius Entry Door w/Screen
- Assist Handle at Entry Door
- Black Trim Accents

Chassis Construction

- Cambered I-Beam Steel Chassis w/Steel Outriggers
- Battery Rack
- Electric Brakes at All Wheels
- Black Rotocast Wheel Wells (Most Models)
- Safety Chains & Breakaway Safety Switch
- E-Z Lube Hubs on Axles
- Four Stabilizer Jacks

Floor Construction

- 5/8" Tongue & Groove Floor Decking

- In Floor Ducted Heating
- Tightly Sealed Woven Polyethylene Underbelly

Features

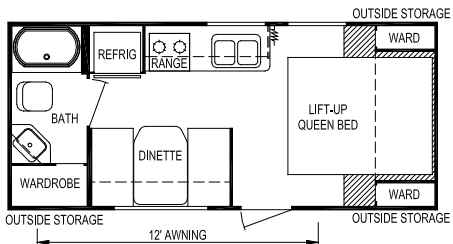
- Two 30 lb. LP Propane Tanks w/Auto Changeover
- Holding Tanks w/Drain Outlet
- Rear Bumper w/Sewer Hose Carrier
- Water Heater Bypass
- Below Floor Fresh Water Tank
- Finished Pass-Through Storage in the Front of Most Models
- Detachable Hitch (Destination Trailers)

Security & Safety

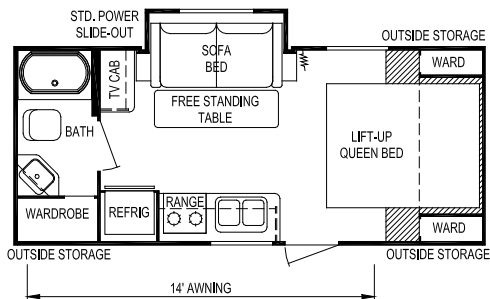
- Smoke Detector
- Propane Leak Detectors
- Carbon Monoxide Alarm
- Flush Door Latch w/Integral Dead Bolt Lock
- Fire Extinguisher

Popular Options

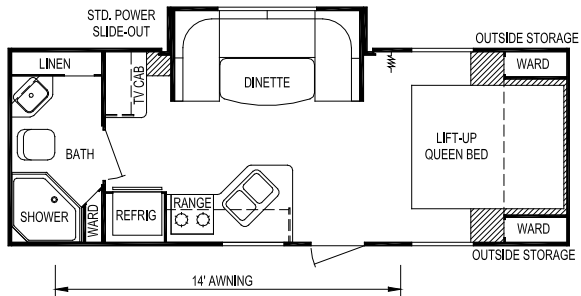
- Power Side Awning w/LED Lights
- Aluminum Wheels
- Camp Kitchen (Select Models)
- Fireplace (Select Models)
- Night Shades
- Outside Shower
- Gas/Electric/DSI Water Heater
- Free-Standing Dinette w/4 Chairs (Replaces Fixed) (Select Models)
- 10 Gallon GE DSI Water Heater (Replaces Standard 6 Gallon Gas DSI) (Destination Trailers)
- 15 Btu A/C (Replaces Standard 13.5 Btu) (Destination Trailers)
- 20" Free-Standing Range (Replaces Standard) (Destination Trailers)
- RV Entry Door (Replaces Standard Patio Door) (Destination Trailers)



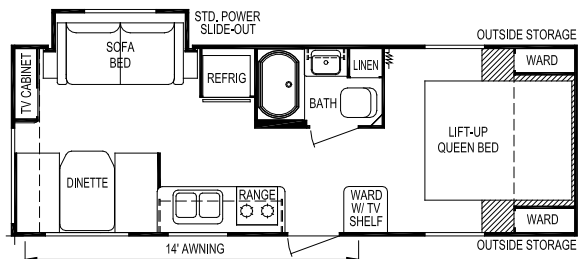
Model 196



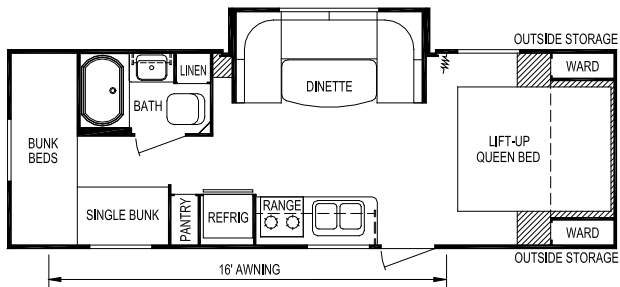
Model 204



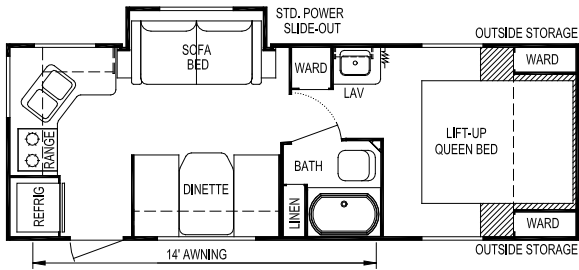
Model 236



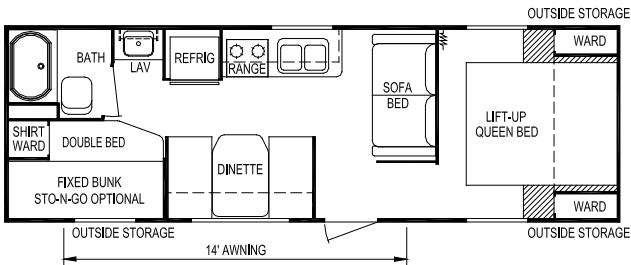
Model 241



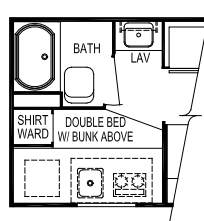
Model 250



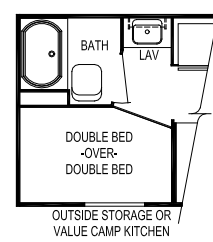
Model 260



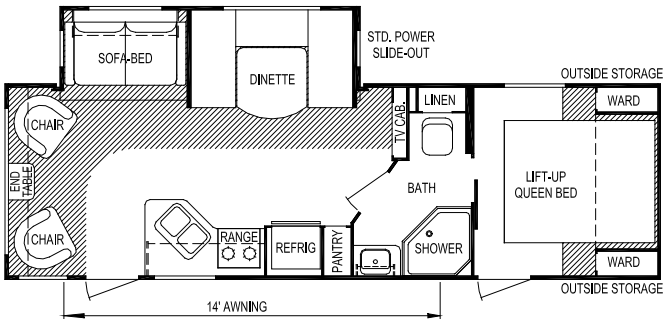
Model 268



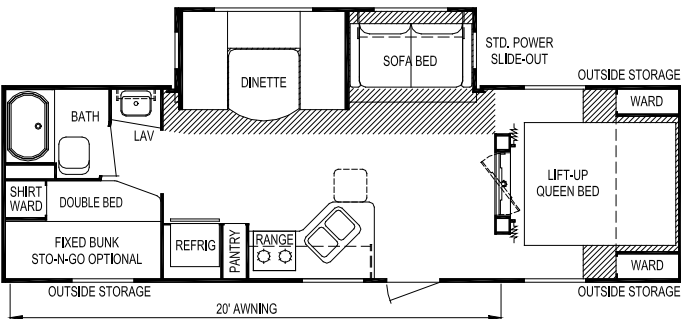
Opt. Value Camp Kitchen
Model 268



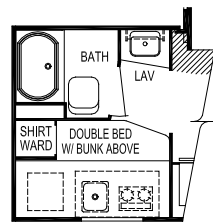
Opt. Double over Double Bed
Model 268



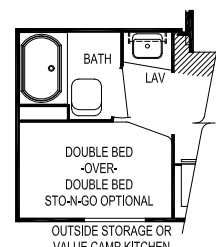
Model 272



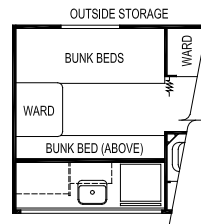
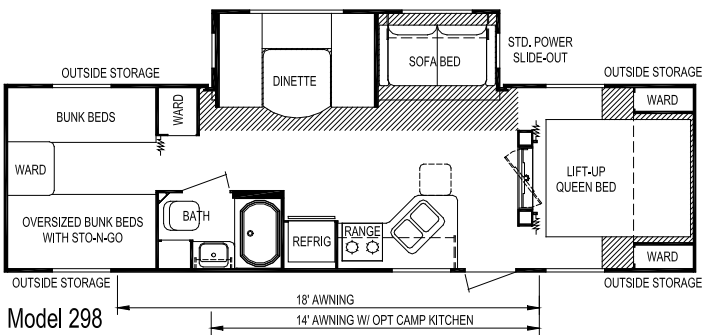
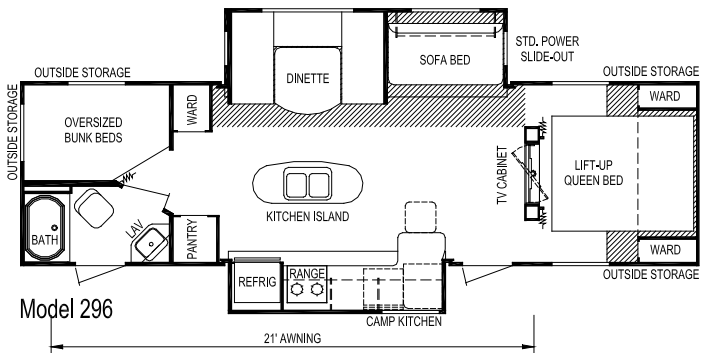
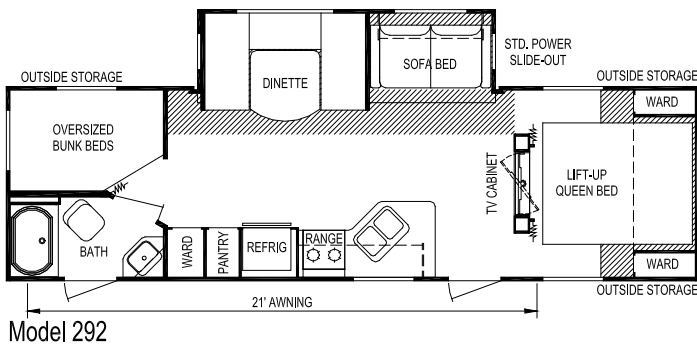
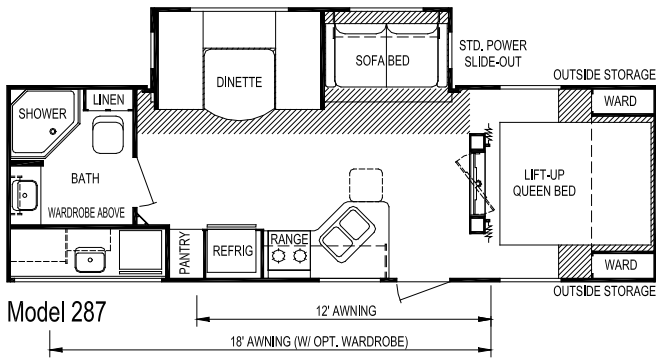
Model 285

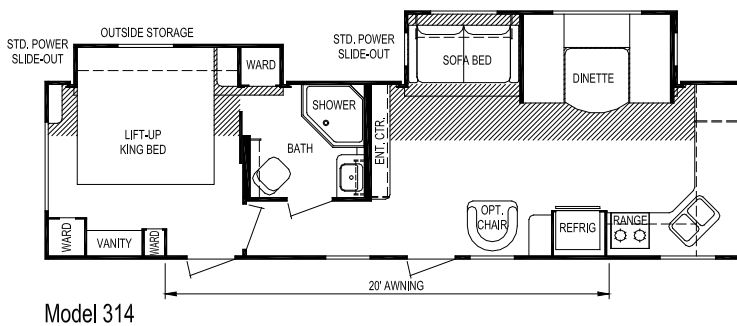
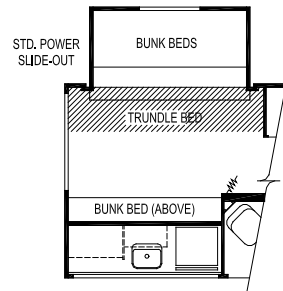
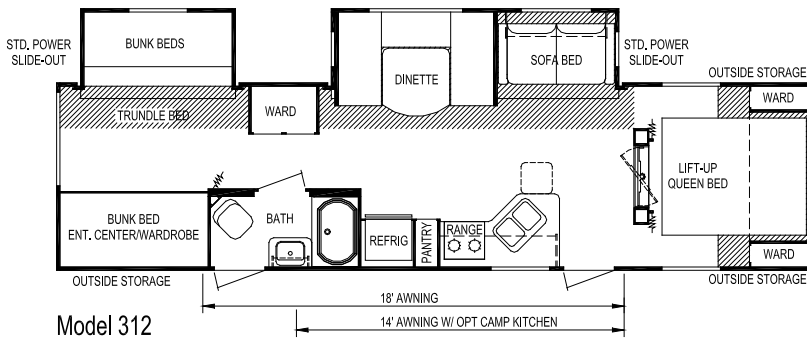
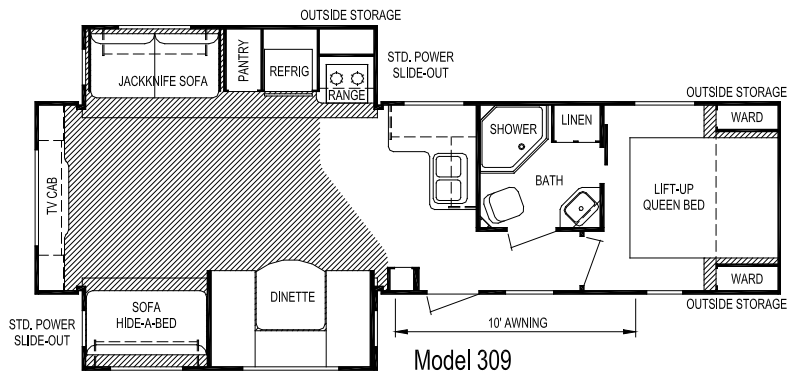
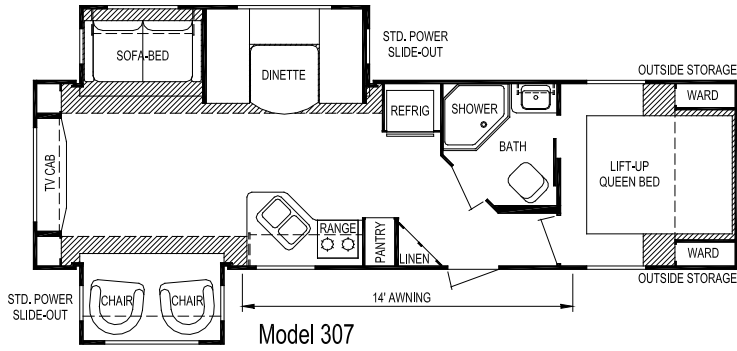


Opt. Value Camp Kitchen
Model 285



Opt. Double over Double Bed
Model 285





Model	196	204	236	241	250	260	268
Weights Unloaded Vehicle Weight (see Note 2)	3,775	4,050	4,650	4,700	4,650	4,725	4,625
Dry Hitch Weight	425	400	525	575	525	600	500
Dry Axle Weight	3,350	3,650	4,125	4,125	4,125	4,125	4,125
GVWR (Total Capacity of Trailer)	5,600	5,600	6,200	6,200	6,200	6,200	6,200
Carrying Capacity (see Note 2)	1,650	1,350	1,350	1,300	1,350	1,275	1,375
Accommodations Sleeping (standard / optional)	4	4	4	6	6	6	8
Bed Size (standard)	60" x 74"	60" x 74"	60" x 74"	60" x 74"	60" x 74"	60" x 74"	60" x 74"
Second Bed Size	N/A	N/A	N/A	N/A	(2) 32" x 90"	N/A	48" x 74" 28" x 76"
Dinette Size	40" x 71"	N/A	44" x 90"	40" x 71"	(1) 28" x 76" 44" x 90"	40" x 71"	40" x 71"
Sofa	N/A	42" x 64"	N/A	42" x 64"	N/A	42" x 64"	42" x 64"
Measurements Exterior Length (see Note 3)	21'-10"	22'-6"	26'-3"	27'-3"	28'-0"	26'-10"	29'-7"
Exterior Width (see Note 3)	96"	96"	96"	96"	96"	96"	96"
Exterior Height (see Note 3)	10'-1"	10'-1"	10'-2"	10'-2"	10'-1"	10'-1"	10'-1"
Interior Height	78"	78"	78"	78"	78"	78"	78"
Capacities Fresh Water System (gallons)	46	46	46	46	46	46	46
Gray Water Tank (gallons)	31	31	31	31	31	62	31
Black Water Tank (gallons)	31	31	31	40	32	31	31
Air Conditioner Size	13,500	13,500	13,500	13,500	13,500	13,500	13,500
Awning Size	12'	14'	14'	14'	16'	14'	18'
Convertor Size (amps)	55	55	55	55	55	55	55
Furnace Rating (Btu)	25,000	25,000	25,000	25,000	25,000	25,000	25,000
Propane Gas Capacity (pounds)	60	60	60	60	60	60	60
Tires	ST205/ 75R14-C	ST205/ 75R14-C	ST205/ 75R14-C	ST205/ 75R14-C	ST205/ 75R14-C	ST205/ 75R14-C	ST205/ 75R14-C
Water Heater (gallons)	6	6	6	6	6	6	6

Notes

(1) All weights, dimensions, and capacities shown are approximate values.

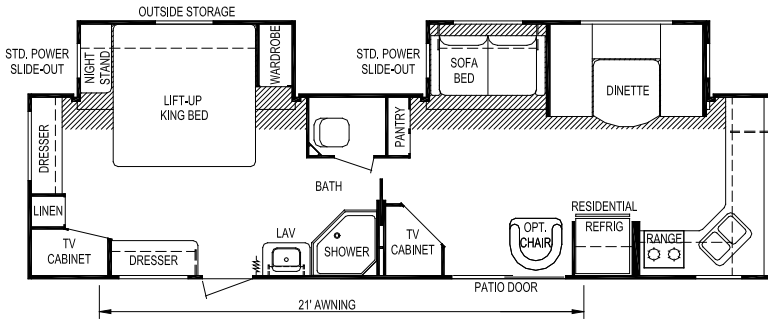
(2) Unloaded vehicle weight and carrying capacity will vary depending upon optional equipment. Full propane tanks are factored into carrying capacity. Skyline weighs every unit at the factory. See trailer weight information label located inside the front entry door for specific unloaded vehicle weight and cargo carrying capacity.

(3) Dimensions stated to industry standards. Exterior length includes approximately a four foot hitch on travel trailers. Exterior height includes air conditioner, if installed. Exterior width does not include the width of the awning, if installed.

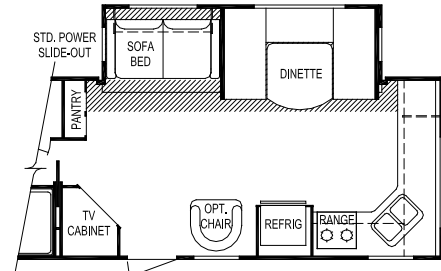
Model	272	285	287	292	296	298	307	309	312	314
Weights Unloaded Vehicle Weight (see Note 2)	6,300	6,050	6,500	6,425	7,425	6,575	7,250	8,125	7,250	7,400
Dry Hitch Weight	700	700	725	825	925	875	725	900	800	1,075
Dry Axle Weight	5,600	5,350	5,775	5,600	6,500	5,700	6,525	7,225	6,450	6,325
GVWR (Total Capacity of Trailer)	7,750	7,750	7,750	11,200	11,200	11,200	11,200	11,200	11,200	11,200
Carrying Capacity (see Note 2)	1,200	1,450	1,000	4,525	3,500	4,350	3,675	2,775	3,675	3,500
Accommodations Sleeping (standard / optional)	6	9	6	9	9	9 / 10	6	7	9 / 10	6
Bed Size (standard)	60" x 74"	60" x 74"	60" x 74"	60" x 74"	60" x 74"	60" x 74"	60" x 74"	60" x 74"	60" x 74"	60" x 74"
Second Bed Size	N/A	48" x 74" 28" x 76"	N/A	(2) 50" x 76"	(2) 50" x 76"	(2) 28" x 76" (2) 38" x 74"	N/A	N/A	(2) 28" x 76" (2) 38" x 74"	N/A
Dinette Size	48" x 79"	48" x 79"	48" x 79"	48" x 79"	48" x 79"	48" x 79"	48" x 79"	48" x 79"	48" x 79"	48" x 79"
Sofa	44" x 74"	44" x 74"	44" x 74"	44" x 74"	44" x 74"	44" x 74"	44" x 74"	44" x 74" 42" x 64"	44" x 74"	44" x 74"
Measurements Exterior Length (see Note 3)	30'-4"	31'-2"	30'-0"	32'-0"	33'-0"	33'-0"	33'-4"	36'-0"	35'-9"	34'-10"
Exterior Width (see Note 3)	96"	96"	96"	96"	96"	96"	96"	96"	96"	96"
Exterior Height (see Note 3)	11'-0"	11'-0"	11'-0"	11'-0"	11'-0"	11'-0"	11'-0"	11'-2"	11'-2"	11'-2"
Interior Height	78"	78"	78"	78"	78"	78"	78"	78"	78"	78"
Capacities Fresh Water System (gallons)	46	46	46	46	46	46	46	36	46	46
Gray Water Tank (gallons)	40	40	62	71	71	40	40	40	40	50
Black Water Tank (gallons)	40	40	40	40	40	40	40	40	40	40
Air Conditioner Size	13,500	13,500	13,500	13,500	13,500	13,500	13,500	13,500	13,500	13,500
Awning Size	14'	20'	12'	21'	21'	18'	14'	10'	18'	20'
Convertor Size (amps)	55	55	55	55	55	55	55	55	55	55
Furnace Rating (Btu)	25,000	25,000	25,000	25,000	25,000	25,000	25,000	25,000	25,000	25,000
Propane Gas Capacity (pounds)	60	60	60	60	60	60	60	60	60	60
Tires	ST205/ 75R15-C	ST205/ 75R15-C	ST205/ 75R15-C	ST225/ 75R15-D	ST225/ 75R15-D	ST225/ 75R15-D	ST225/ 75R15-D	ST225/ 75R15-D	ST225/ 75R15-D	ST225/ 75R15-D
Water Heater (gallons)	6	6	6	6	6	6	6	6	6	6

Notes

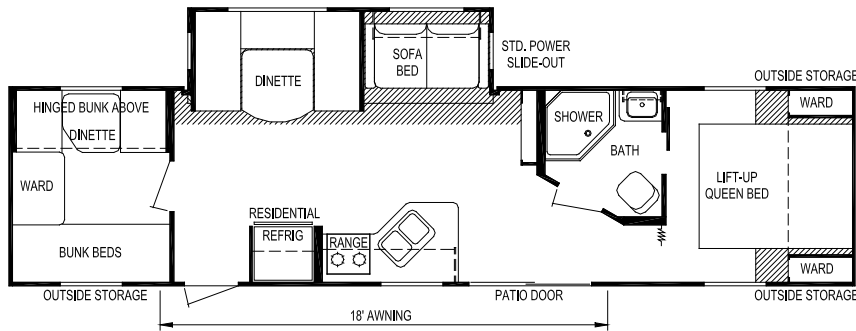
- (1) All weights, dimensions, and capacities shown are approximate values.
- (2) Unloaded vehicle weight and carrying capacity will vary depending upon optional equipment. Full propane tanks are factored into carrying capacity. Skyline weighs every unit at the factory. See trailer weight information label located inside the front entry door for specific unloaded vehicle weight and cargo carrying capacity.
- (3) Dimensions stated to industry standards. Exterior length includes approximately a four foot hitch on travel trailers. Exterior height includes air conditioner, if installed. Exterior width does not include the width of the awning, if installed.



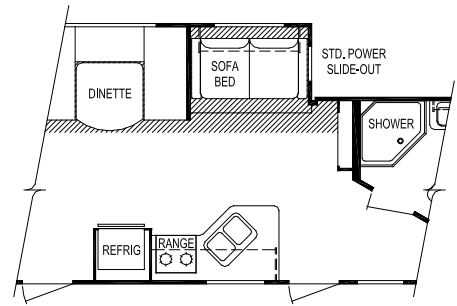
Model 327



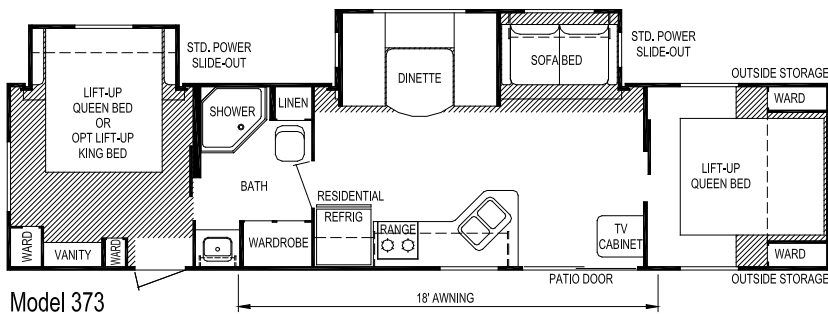
OPT. FRONT ENTRY (Model 327)



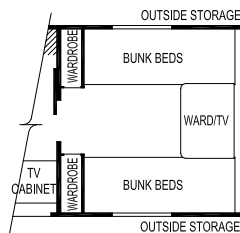
Model 340



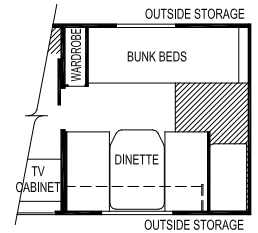
OPT. FRONT ENTRY (Model 340)



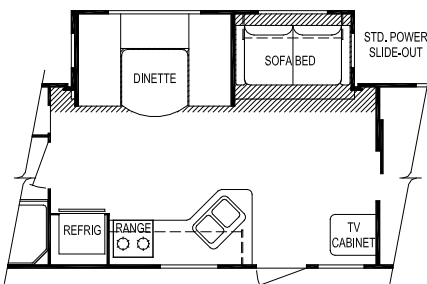
Model 373



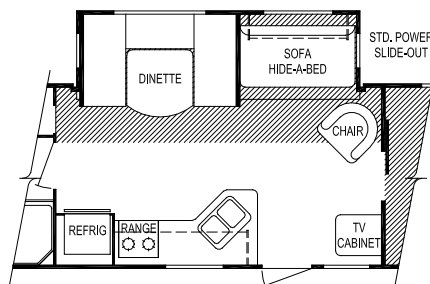
Option Front Bunks W/ Bunks (Model 373)



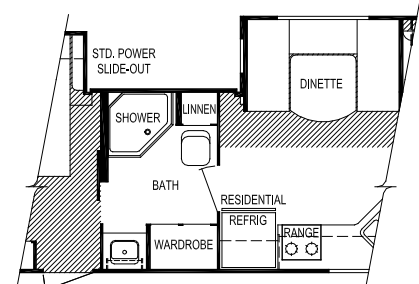
Option Front Dinette (Model 373)



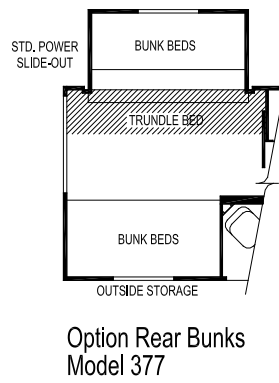
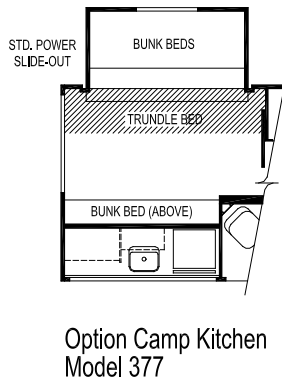
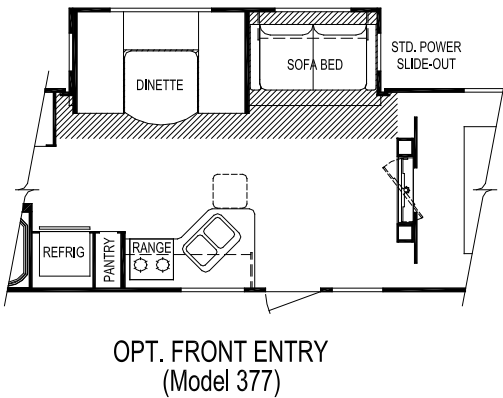
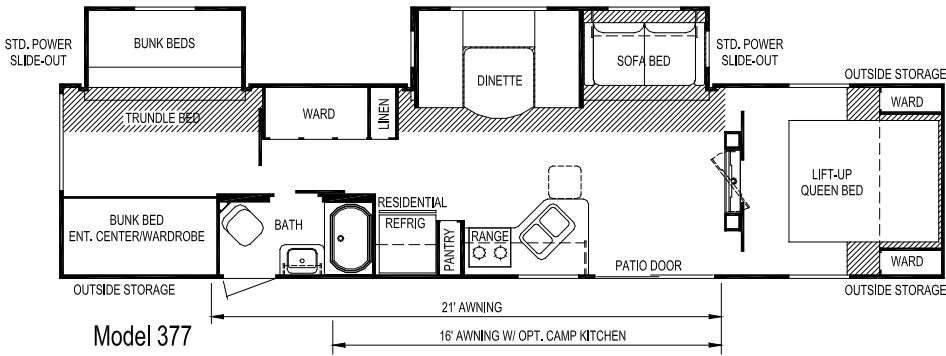
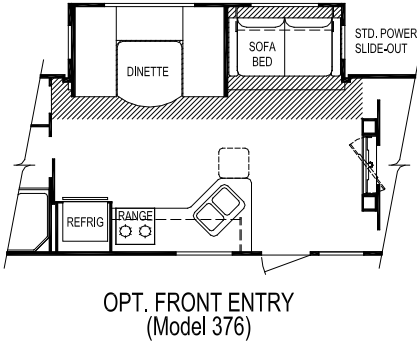
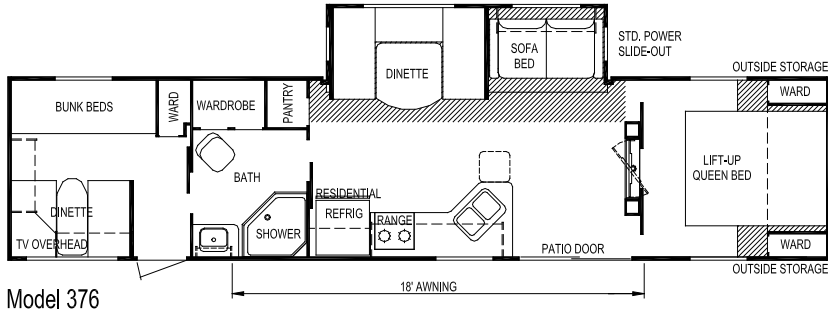
Option Front Entry Door (Model 373)

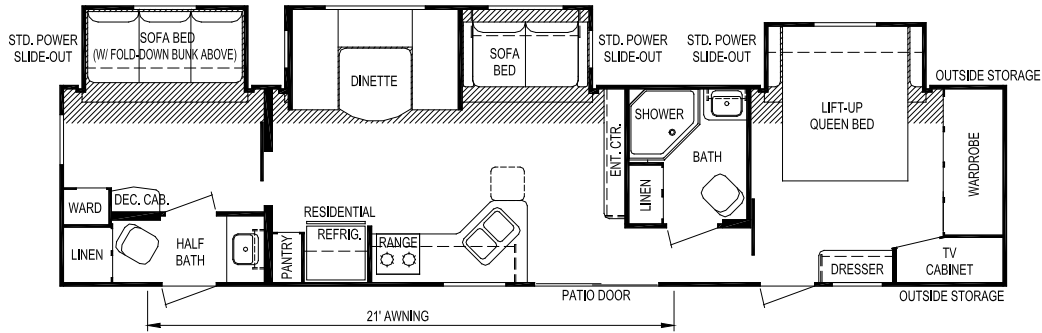


Option Front Entry Door (Model 373)

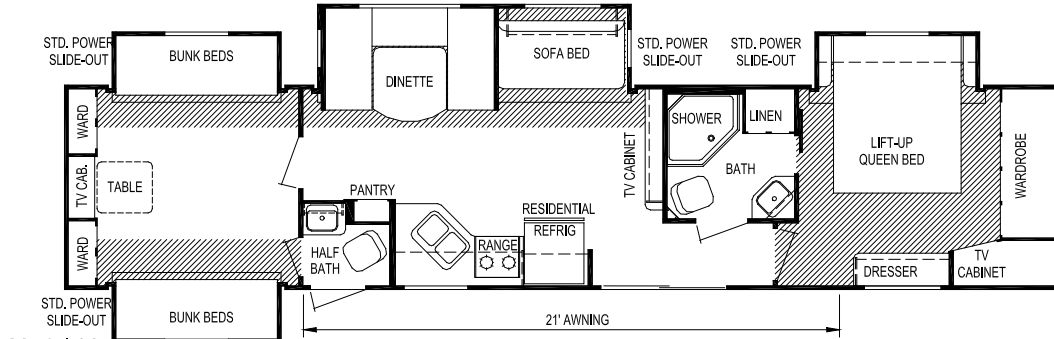


Alternate Bath (Model 373)





Model 381



Model 387

Model	327	340	373	376	377	381	387	
Weights	Unloaded Vehicle Weight (see Note 2)	7,875	7,600	7,600	7,600	8,425	9,525	9,975
	Dry Hitch Weight	1,025	1,000	1,000	1,150	1,000	1,250	1,200
	Dry Axle Weight	6,850	6,600	6,600	6,450	7,425	8,275	8,775
	GVWR (Total Capacity of Trailer)	11,200	11,200	11,200	11,200	11,200	11,200	11,200
	Carrying Capacity (see Note 2)	3,050	3,300	3,300	3,300	2,450	1,325	875
Accommodations	Sleeping (standard / optional)	6	10	8 / 12	10	8	8	10
	Bed Size (standard)	74" x 74"	60" x 74"	60" x 74"	60" x 74"	60" x 74"	60" x 74"	60" x 74"
	Second Bed Size	N/A	(3) 28" x 76"	60" x 74"	(2) 28" x 76"	(2) 28" x 76" (2) 38" x 74"	28" x 76"	(4) 28" x 76"
	Dinette Size	48" x 79"	48" x 79" 30" x 72"	48" x 79"	48" x 79" 40" x 71"	48" x 79"	48" x 79"	48" x 79"
	Sofa	44" x 74"	44" x 74"	44" x 74"	44" x 74"	44" x 74"	42" x 74" 44" x 74"	44" x 74"
Measurements	Exterior Length (see Note 3)	36'-0"	37'-8"	38'-9"	39'-6"	39'-11"	41'-6"	42'-6"
	Exterior Width (see Note 3)	96"	96"	96"	96"	96"	96"	96"
	Exterior Height (see Note 3)	11'-2"	11'-2"	11'-2"	11'-2"	11'-4"	11'-2"	11'-4"
	Interior Height	78"	78"	78"	78"	78"	78"	78"
Capacities	Fresh Water System (gallons)	46	36	46	36	36	36	46
	Gray Water Tank (gallons)	50	50	40	40	40	80	80
	Black Water Tank (gallons)	40	40	40	40	40	64	72
	Air Conditioner Size	13,500	13,500	13,500	13,500	13,500	13,500	13,500
	Awning Size	21'	18'	18'	18'	21'	21'	21'
	Convertor Size (amps)	55	55	55	55	55	55	55
	Furnace Rating (Btu)	25,000	25,000	25,000	25,000	25,000	25,000	25,000
	Propane Gas Capacity (pounds)	60	60	60	60	60	60	60
	Tires	ST225/ 75R15-D	ST225/ 75R15-D	ST225/ 75R15-D	ST225/ 75R15-D	ST225/ 75R15-D	ST225/ 75R15-D	ST225/ 75R15-D
Water Heater (gallons)	6	6	6	6	6	6	6	

Notes

(1) All weights, dimensions, and capacities shown are approximate values.

(2) Unloaded vehicle weight and carrying capacity will vary depending upon optional equipment. Full propane tanks are factored into carrying capacity. Skyline weighs every unit at the factory. See trailer weight information label located inside the front entry door for specific unloaded vehicle weight and cargo carrying capacity.

(3) Dimensions stated to industry standards. Exterior length includes approximately a four foot hitch on travel trailers. Exterior height includes air conditioner, if installed. Exterior width does not include the width of the awning, if installed.

Skyline Customer Satisfaction

Skyline Customer Satisfaction is more than just a promise. We believe you deserve quality in every aspect of ownership. To ensure your continued satisfaction, we're dedicated to providing you with a quality product along with the very best service available in our industry. Skyline's "Commitment of Excellence" will be a source of pride and satisfaction for you.

Contact your Skyline dealer for details.



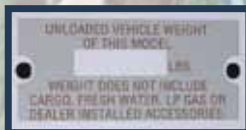
Member
RVIA
RECREATION VEHICLE
INDUSTRY ASSOCIATION

Solid Construction



DURABLE, ONE-PIECE RUBBER ROOF
12-year manufacturer's limited warranty. U.V. ray resistant. Provides complete, watertight seal.

ACTUAL WEIGHTS, NOT ESTIMATED WEIGHTS
For your safety and peace of mind, Skyline weighs every recreational vehicle at the factory. Other manufacturers use estimated weights which can be in error by as much as 20 percent. Insist your recreational vehicle includes an actual weight next to the entry door.



DOUBLE WRAPPED AND SEALED CORNERS WITH RUBBER INSERT MOLDING
Overlapped metal provides watertight design. Tape and molding application.



To discover more about the innovative and impressive Nomad by Skyline, scan this code with the QR Reader on your smart phone for instant access to our web site.



Go RVing

No-Nonsense Warranty

Manufacturing defects reported to Skyline within one year after original retail delivery of your new Travel Trailer by an authorized dealer will be corrected without charge and within reasonable times. Excluded are misuse (including lack of reasonable maintenance), minor imperfections, alterations, and dealer or owner improper transportation, installation, or hookup.

This warranty gives you specific legal rights. You may have other rights which vary from state to state.

Skyline's suppliers often provide additional warranties on their components beyond the Skyline factory bumper-to-bumper warranty. For example — the range, water heater, furnace and convertor carry two-year supplier warranties while the air conditioner, refrigerator, microwave and awning carry three-year warranties. The one-piece roof carries a 12-year warranty. Ask your dealer for full details.

Manufacturer's Notice: All specifications, equipment, and prices are subject to change without prior notice. Production of all models subject to seasonal scheduling. Skyline Corporation reserves the right to improve a model without incorporating these changes in similar models produced at an earlier date.

Consult your automobile dealer and your recreational vehicle dealer to assure the proper match between tow vehicle and trailer. Tow vehicle and recreational unit must be properly equalized for efficient product performance and safety. Before you purchase your recreational vehicle, carefully consider the number of people it will accommodate and its end use. Manufacturer's load capacity restrictions and recommendations must be followed for safe and efficient product performance.

Your Retailer, an independent contractor, who is not an agent of Skyline Corporation, is the party responsible for your purchase contract and any additions, deletions, alterations, or attachments made to or in your recreational vehicle.

SKYLINE

STRENGTH • KNOWLEDGE • TRUST



Like us on Facebook

(www.facebook.com/skylinervindiana)

For the name of your nearest Skyline-built RV dealer, call: Bristol, Indiana 800-736-2573
Or visit us at our Web Site at www.skylinerv.com